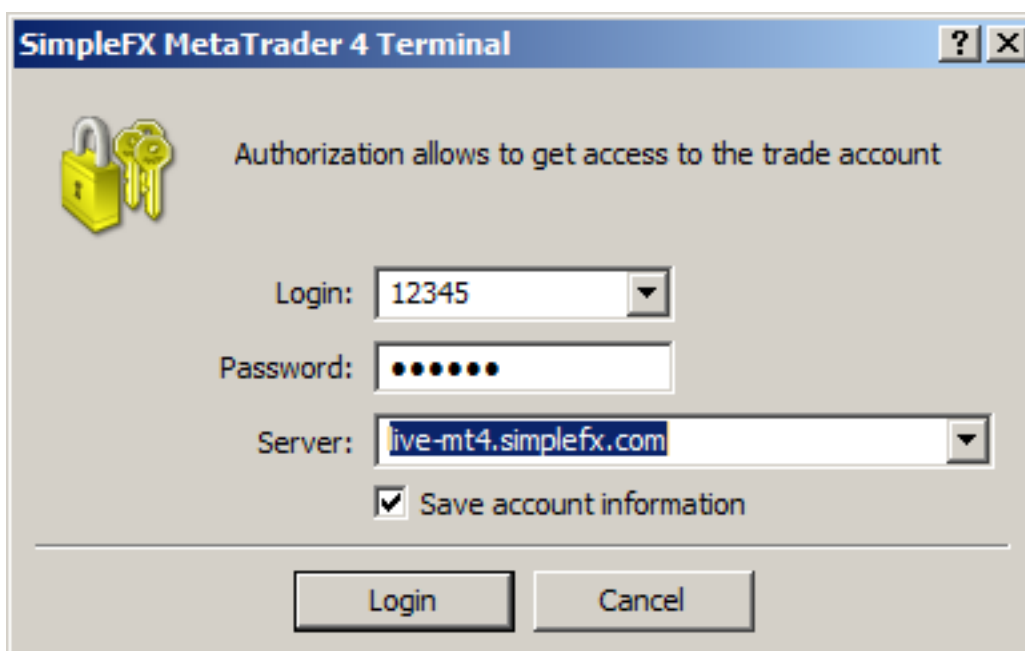


MetaTrader4 Quick Guide

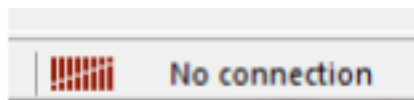
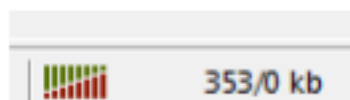
You can access your accounts via MetaTrader4 platform available in downloads section: <https://simplefx.com/downloads/>. If you registered traditionally with your email address, your MetaTrader4 password will be the same as on the website. If you registered through G+, Facebook or VK, you should receive an email with login credentials.

After successful installation, the MT4 program will launch and prompt the user to open an account. Cancel this process and choose **File->Login to Trade Account**.



The screenshot shows the 'SimpleFX MetaTrader 4 Terminal' window. It features a title bar with a question mark and a close button. Below the title bar is a yellow padlock icon and the text 'Authorization allows to get access to the trade account'. The form contains three input fields: 'Login:' with the value '12345', 'Password:' with seven black dots, and 'Server:' with the value 'live-mt4.simplefx.com'. A checkbox labeled 'Save account information' is checked. At the bottom, there are two buttons: 'Login' and 'Cancel'.

Fill in your login data and remember to choose correct server address (live or demo). You can check your connection status in the bottom-right corner of MT4 window.



PLATFORM OVERVIEW

MT4 is divided to five areas:

1. **Market Watch** - here you can check all available instruments, their prices, specification and open charts
2. **Navigator** - Here you can see your accounts and manage technical indicators
3. **Charts**
4. **Terminal** - here you can see your open, pending and closed trades and check your account balance, profit/loss and available margin
5. **Toolbars** - here you can choose time interval of your charts, switch between candlestick or line chart and also find drawing tools to use on your charts



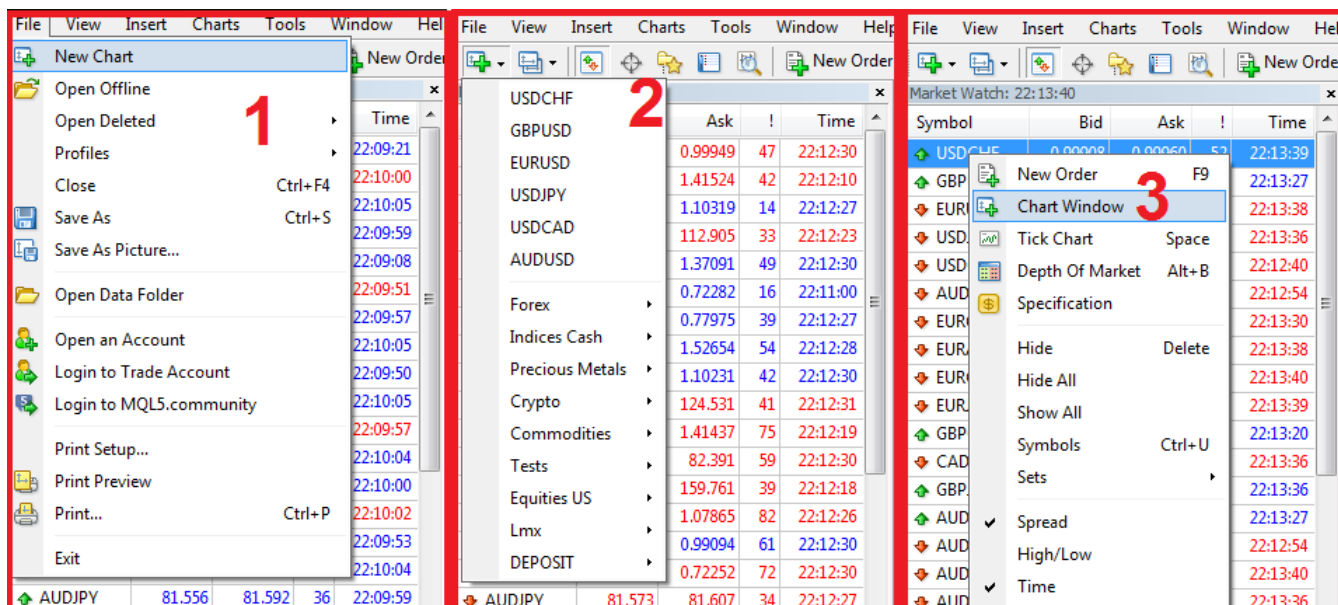
Right-click into the middle of the **Market Watch** window and select **Show all** in the menu. Now all available instruments will be displayed.

Symbol	Bid	Ask	Time
USDCHF	1.02614	1.02626	08:47:05
USDCNH	6.44090	6.44160	08:47:04
USDCZK	25.4491	25.4626	08:47:05
USDDKK	7.02584	7.02669	08:47:05
USDHKD	7.75013	7.75058	08:46:43
USDHUF	293.770	293.980	08:47:03
USDILS	3.8780	3.8810	08:41:14
USDJPY	123.159	123.169	08:47:05
USDMXN	16.50551	16.51429	08:46:11
USDNOK	8.63262	8.63612	08:47:05
USDPLN	4.02930	4.03086	08:47:05
USDSEK	8.69440	8.69770	08:47:05
USDSGD	1.40933	1.40956	08:47:05
USDTRY	2.87730	2.87808	08:47:04
USDZAR	14.3		
XAUAUD	14		
XAUEUR	10		
XAUUSD	10		
XAGAUD	1		
XAGUSD	1		
XPDUSD	5		
XPTUSD	8		
ASX200	5		
DJB30	1		
HSI50	2		
NDX100	4		

- New Order F9
- Chart Window
- Tick Chart Space
- Depth Of Market Alt+B
- Specification
- Hide Delete
- Hide All
- Show All
- Symbols Ctrl+U
- Sets

CHART

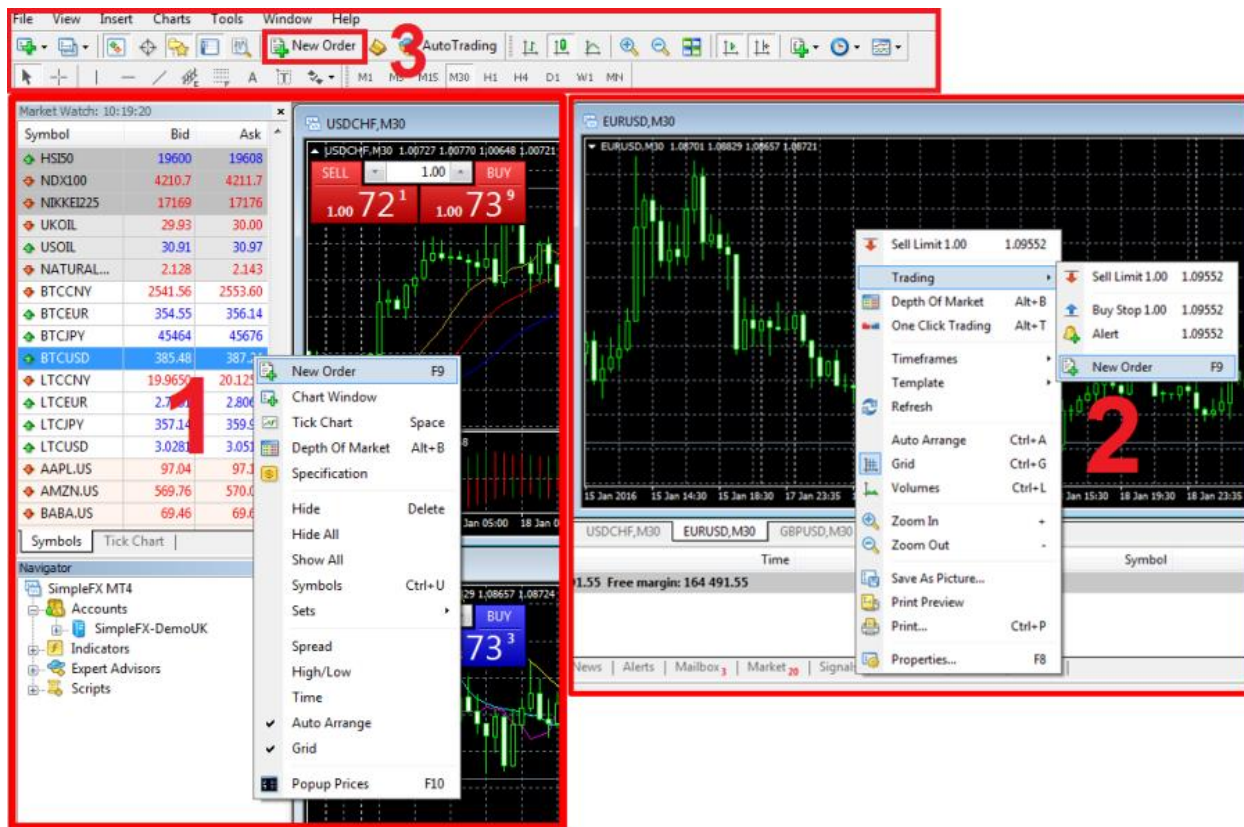
1. Go to the menu and select **File**, and then select **New Chart**.
2. Selecting **New Chart**, and then select the instrument of choice from the dropdown list to open the chart.
3. Go to the **Market Watch** window, right-click on the symbol of choice and select **Chart Window** from the dropdown list.



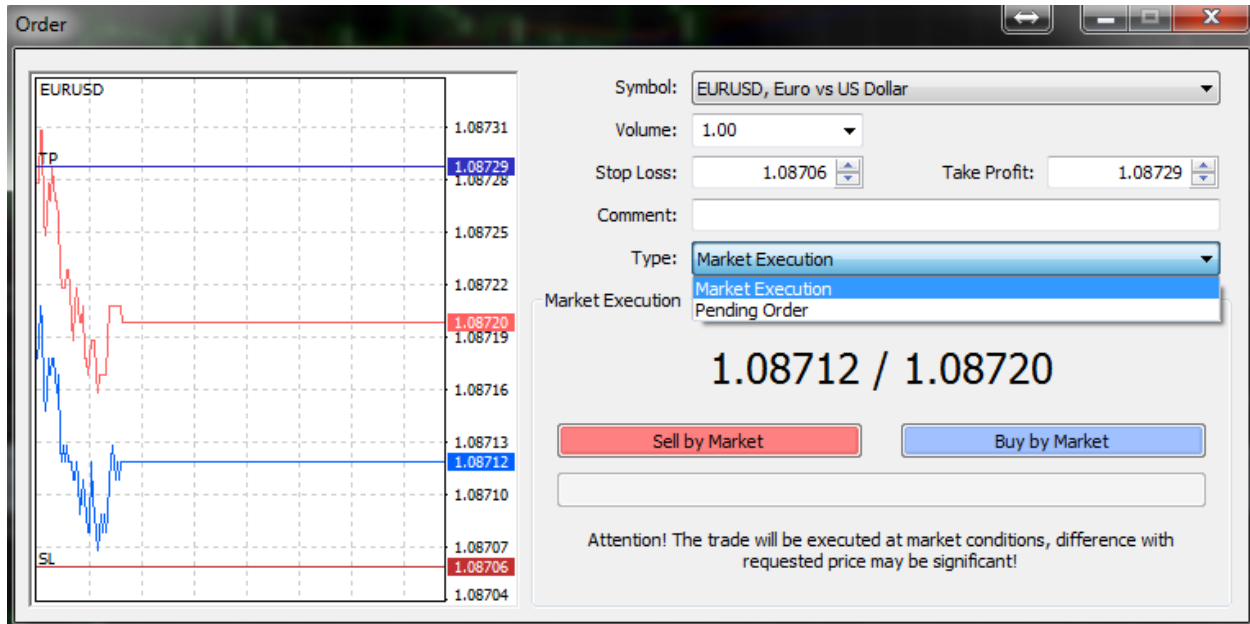
TRADE

Once a trader is ready to enter an order into the market, the **Order** window will have to be opened. This can be accomplished in three ways:

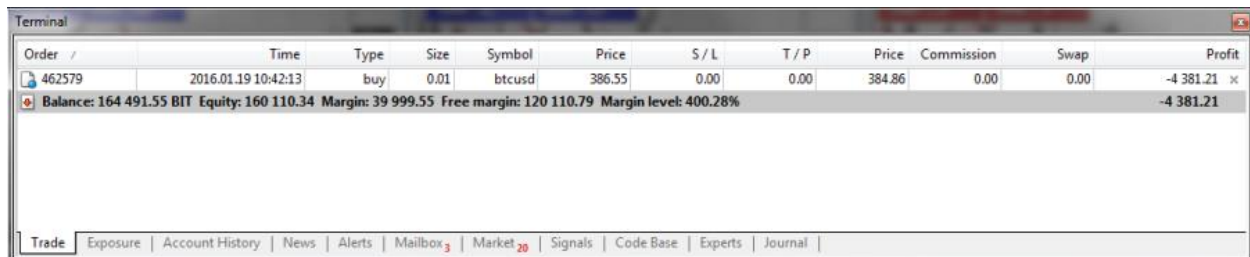
1. Right-clicking on a currency pair in the **Market Watch** window and selecting **New Trade**
2. Right-clicking on an active chart and selecting **Trade->New Order**
3. Clicking on the **New Order** button in the toolbar



In **New Order** window you can set parameters of the trade: instrument, size and stop loss/take profit levels.



In MT4 opened orders appear in the **Terminal**. You can add stop loss, take profit, check your profit and loss, account balance, margin level and close the position.



1. To add **S/L** or **T/P** levels, right-click on the position and select **Modify or Delete Order**.
2. To **close** the trade, right-click on the position and select **Close Order** or click **x** icon.

