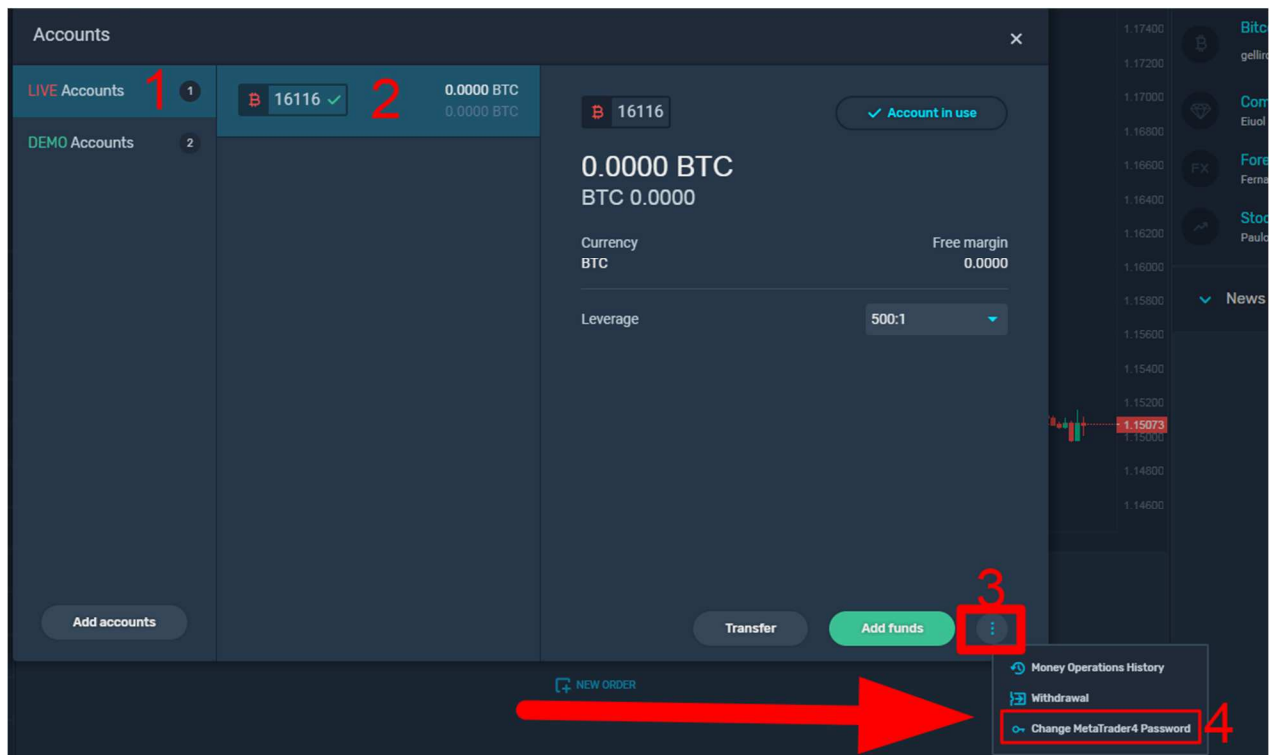


How to login to your existing SimpleFX account on MetaTrader4 and MetaTrader4 for Mobile platforms.

1. After registration on SimpleFX website (<https://simplefx.com>) or Web Platform (<https://app.simplefx.com>):
 - your MetaTrader4 password will be the same as on the website/web platform - go to step 3.
 - if the password does not work, please set a new one in the Web Platform (<https://app.simplefx.com>) - go to step 2.

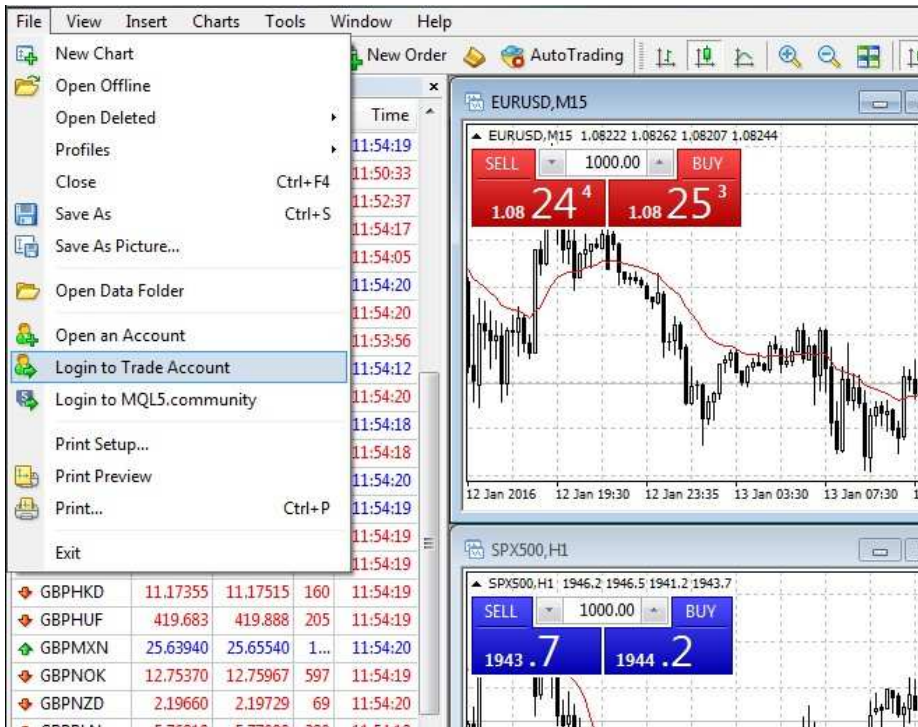


2. Click on menu toggle in top right corner of Web Platform screen and choose "Accounts & Deposits". Find the account for which you want to change a password, choose "LIVE" or "DEMO" and then account number. After that, click triple dots menu button and "Change MetaTrade4 Password". Please follow the steps from a screenshot:



3. Please login to MetaTrader 4 platform:

- After opening the platform, please choose File->Login to Trade Account



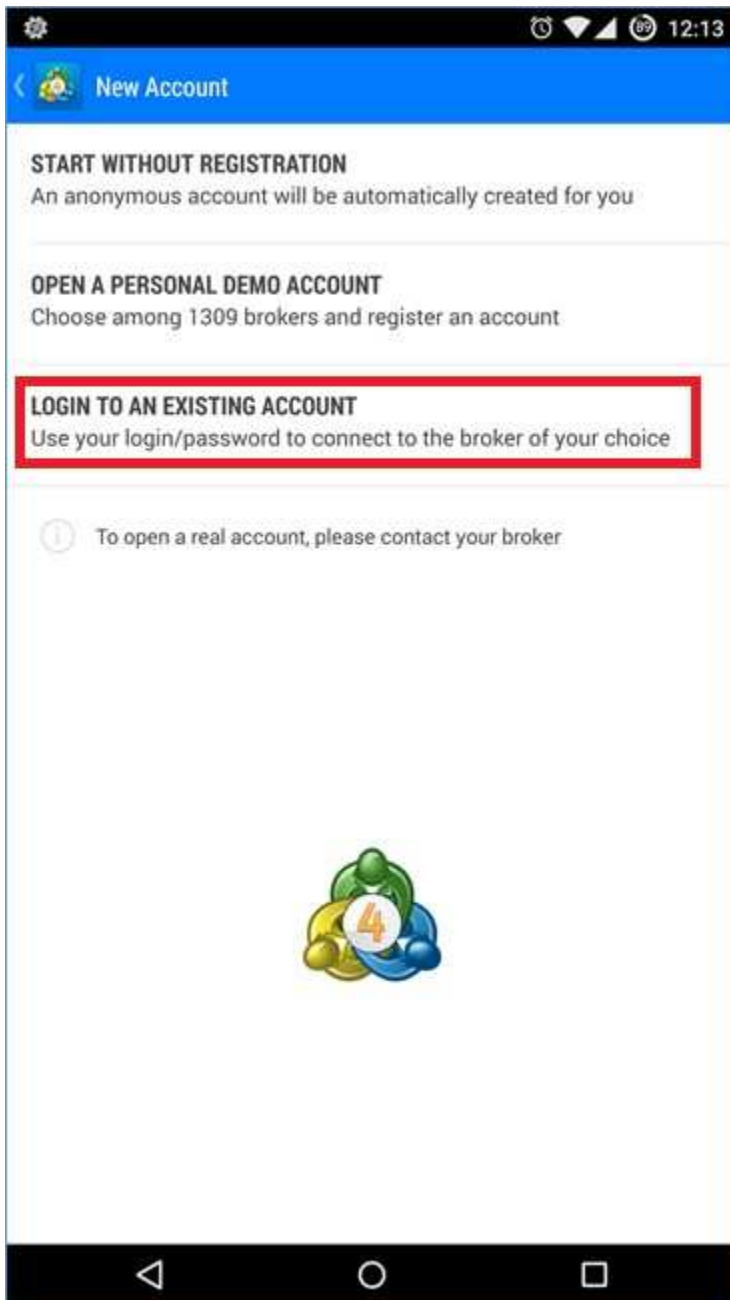
- Fill in login credentials → Login = account number
- Server -> 'SimpleFX-LiveUK' or live-mt4.simplefx.com for Live (Real) accounts
- Server -> 'SimpleFX-DemoUK' or demo-mt4.simplefx.com for Demo accounts



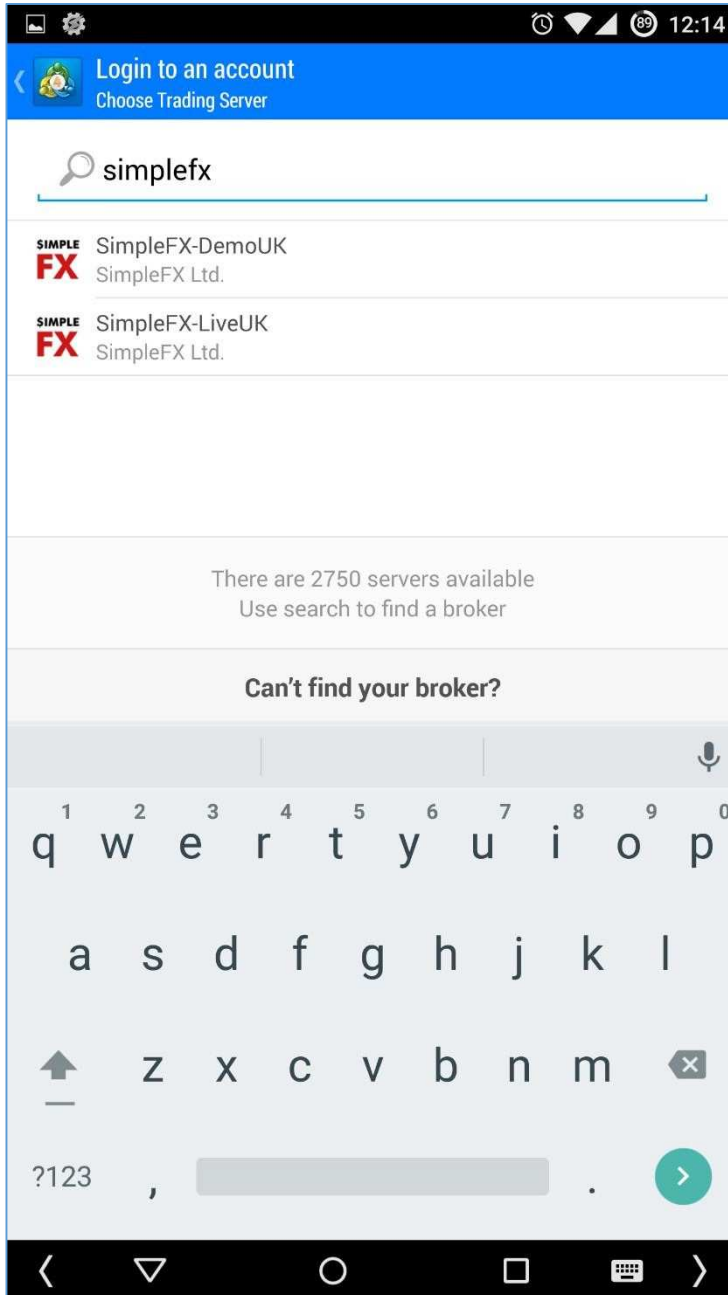
You can check your connection status in the bottom-right corner of MT4 window.



4. You can also use MetaTrader4 for Mobile
 - After opening MetaTrader4 application, please Choose 'Login to an existing account':



- Find SimpleFX by using your keyboard and choose Demo or Live server, regarding which one you want to use:



- Login to your account using account number and password

